

## How To Guide for *Pre-Algebra Plus*

### Welcome to *Pre-Algebra Plus*!

*Pre-Algebra Plus* is a standards-aligned supplemental mathematics course in the Math-U-See Plus line, designed as an add-on to the full-year Legacy Pre-Algebra curriculum. It provides the additional instruction necessary to achieve full standards alignment and prepares students for success in rigorous mathematics courses such as Algebra 1: Principles of Secondary Mathematics (PSM).

Pre-Algebra Plus does not replace or resequence the core course. Instead, it delivers focused digital lessons that introduce and develop concepts required for comprehensive standards alignment while remaining fully aligned to Math-U-See's established pedagogy.

Through structured supplemental instruction, students build conceptual understanding and mathematical reasoning beyond procedural fluency. By adding targeted content without disrupting the original course progression, Pre-Algebra Plus extends the instructional scope of the core curriculum and supports a smooth transition into advanced algebra coursework.

### Student Readiness

Here are important notes on student readiness for *Pre-Algebra Plus*:

- **Prerequisite Knowledge:** Students should have exposure to Pre-Algebra concepts through completion of a Pre-Algebra course or enrollment in a course with a comparable scope and sequence. Pre-Algebra Plus may be used alongside the Legacy Pre-Algebra curriculum or following its completion to provide the additional instruction necessary for full standards alignment.
- **Recommended Use:** Pre-Algebra Plus is designed for use alongside or following the Legacy Pre-Algebra course as a supplemental standards-alignment resource.
- **Recommended Support:** Pre-Algebra Plus is appropriate for a wide range of learners due to mastery-based pacing and instructor-guided decision points that allow for responsive implementation.

### What is included with access to *Pre-Algebra Plus*?

*Pre-Algebra Plus* is a fully online curriculum. From the Online Lessons, you can access everything you need to succeed!

#### Course components include:

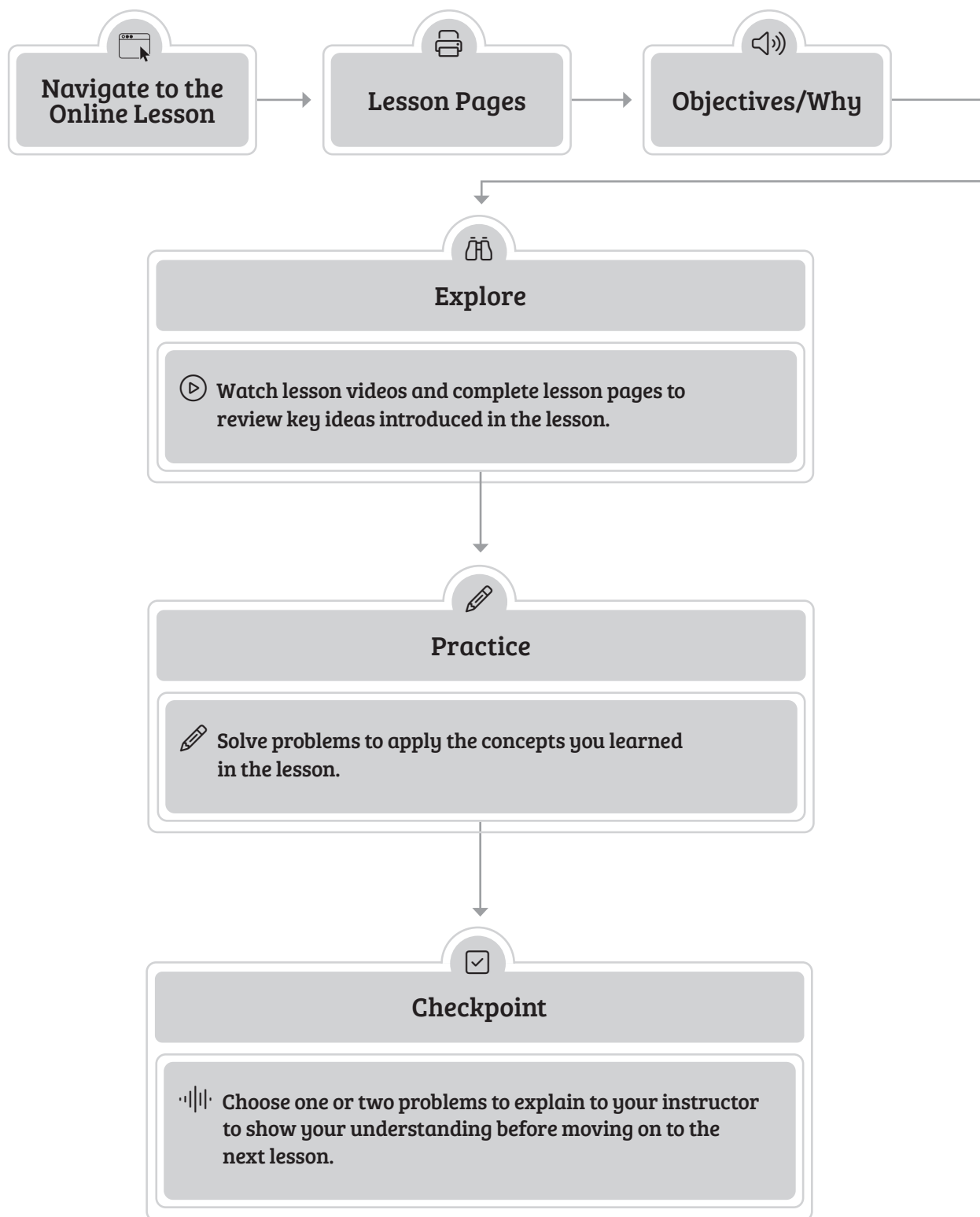
- How To Guide
- Record Keeping Sheet
- Online Lessons with videos
- Printable Lesson Pages
- Online Solutions

## Instructor vs Student Access

There are some important differences between instructor and student sign-ins. This chart shows the differences between instructor and student access.

All student and instructor components and materials are accessible online.	Instructor Access	Student Access
Instructions for navigating the lesson	✓	✓
Access to print Lesson Pages	✓	✓
Presentation videos of concepts and example problems	✓	✓
Helpful instructor tips and notes	✓	

## Pre-Algebra Plus Lesson Flow



## How to Complete a Lesson for Students and Instructors

This course allows for considerable student independence. For students, the Online Lesson is the “control center” for moving through a lesson. When unsure about what to do next, students can rely on the Online Lesson.

Online Lesson Item	Student Description	Instructor Description
<b>Get Started</b>	Instructions are available online.	Instructions and Lesson Solutions are available online.
<b>Lesson Pages button</b>	At the start of each lesson, your student uses it to access and print Lesson Pages.	
<b>Objectives and Why?</b>	List what the student will learn during the lesson and why it is important.	
<b>Explore (1 per lesson)</b>	This is where core instruction takes place. Your student watches guided notes and example problem videos, completing the Lesson Pages alongside the instructions.	Instructions and Solutions are available online.
<b>Practice</b>	Now it's time for your student to practice what they have learned by completing problems on their own.	Instructions and Solutions are available online.
<b>Checkpoint</b>	Your student is directed to check in.	Checkpoint determines whether your student is ready to move to the next lesson or needs additional review of the current lesson.